



CARMEN HOSTEN  
interior design - furniture - architecture



2024

---

# HOUSE NKOSI

ARCHITECTURAL DESIGN PROJECT BY



CARMEN HOSTEN

interior design - furniture - architecture



**ERF SIZE:**  
613M2

**FLOOR COVERAGE OF HOUSE:**



**Indoor m2**  
Ground floor: 239m2  
Loft: 59m2

Total: 298m2



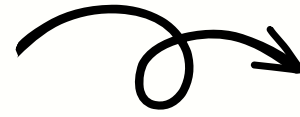
**Outdoor m2:**  
Patio: 54m2  
Splash pool: 19m2

Total: 73m2

**GRAND TOTAL: 371mm2**

# PROJECT INSPIRATION

OPEN OFFICE LOFT



MODERN, CONTEMPORARY, FARMSTYLE INSPIRED HOUSE WITH HIGH PITCH IBR ROOF, STONE CLADDED WALLS, LARGE ALUMINIUM WINDOWS AND DOORS, AN OPEN PLAN LIVING SPACE AND EXPOSED LOFT OFFICE.

# MODERN FARMSTYLE



ALUMINIUM GARAGE DOORS



# EXTERIOR RENDERING: NORTH VIEW



# EXTERIOR RENDERING: WEST VIEW



CARMEN HOSTEN  
interior design - furniture - architecture



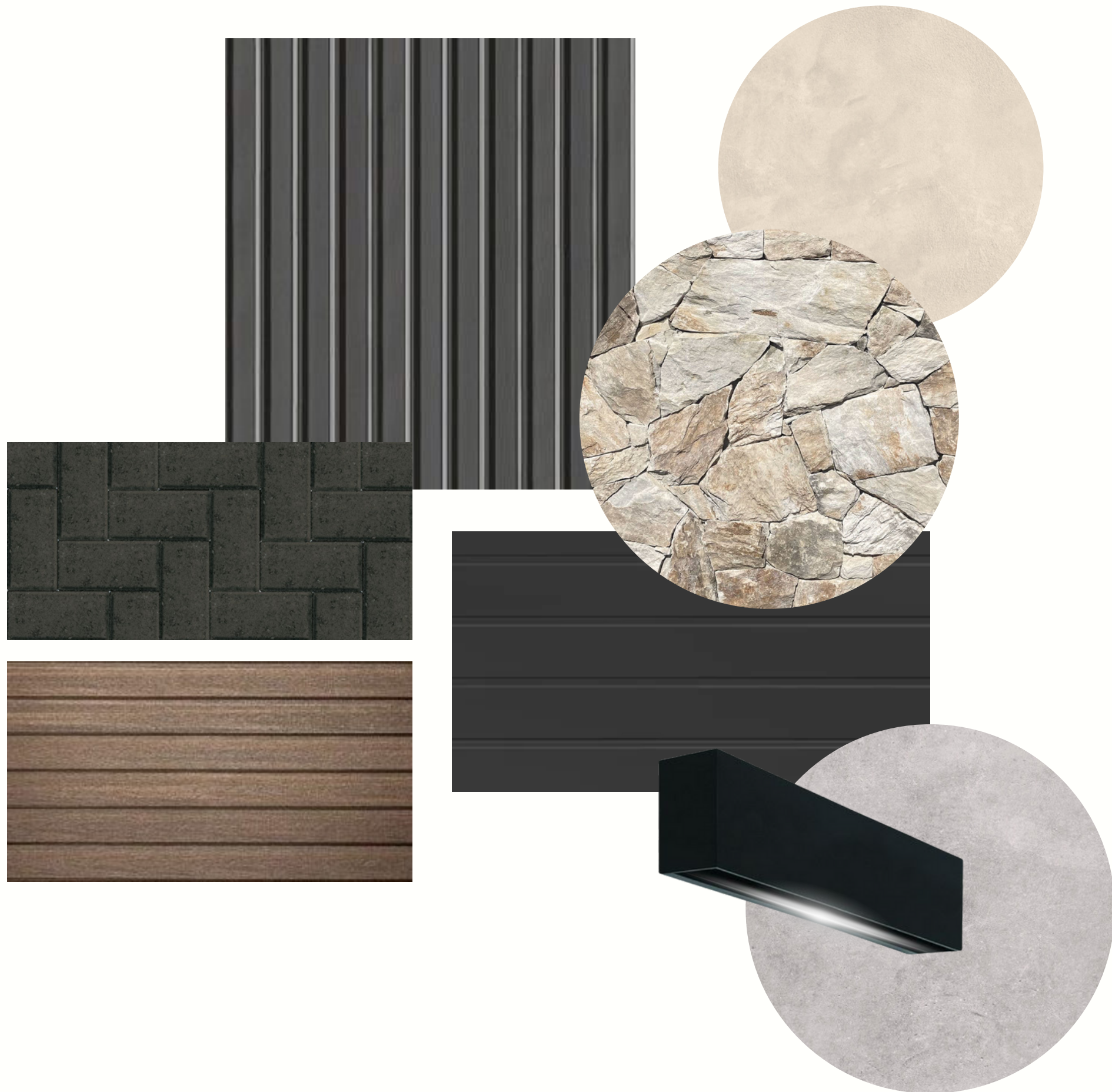
# EXTERIOR RENDERING: EAST VIEW



CARMEN HOSTEN  
interior design - furniture - architecture



# ARCHITECTURAL COLOR SCHEME



## Materials

### Material 1

IBR ROOF SHEETING IN CHARCOAL

### Material 2

PLASTERED WALLS WITH MIXX PAINT FINISH

### Material 3

CHARCOAL PAVING for GARAGE RAMP AND UNDERCOVER BOAT PARKING

### Material 4

STONE CLADDING

### Material 5

OUTDOOR DECKING NEWTECH WOOD

### Material 5

ALUMINIUM GARAGE DOORS IN CHARCOAL

### Material 5

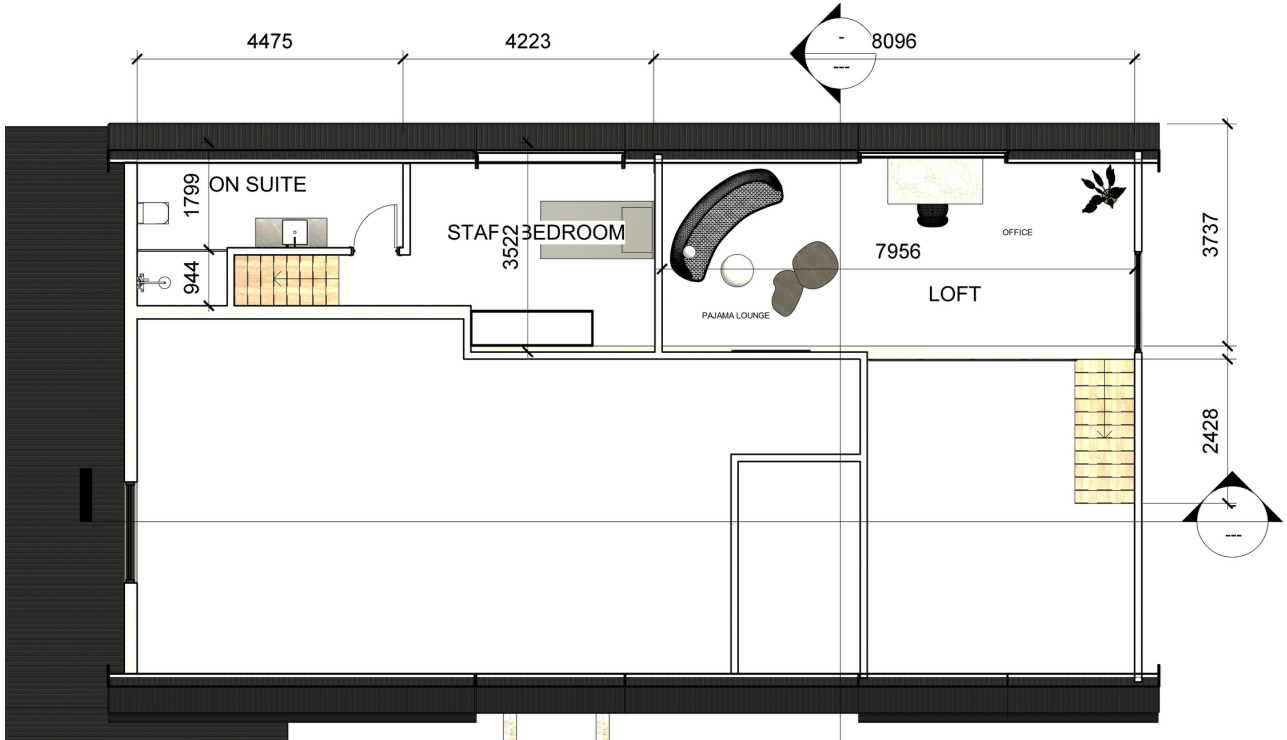
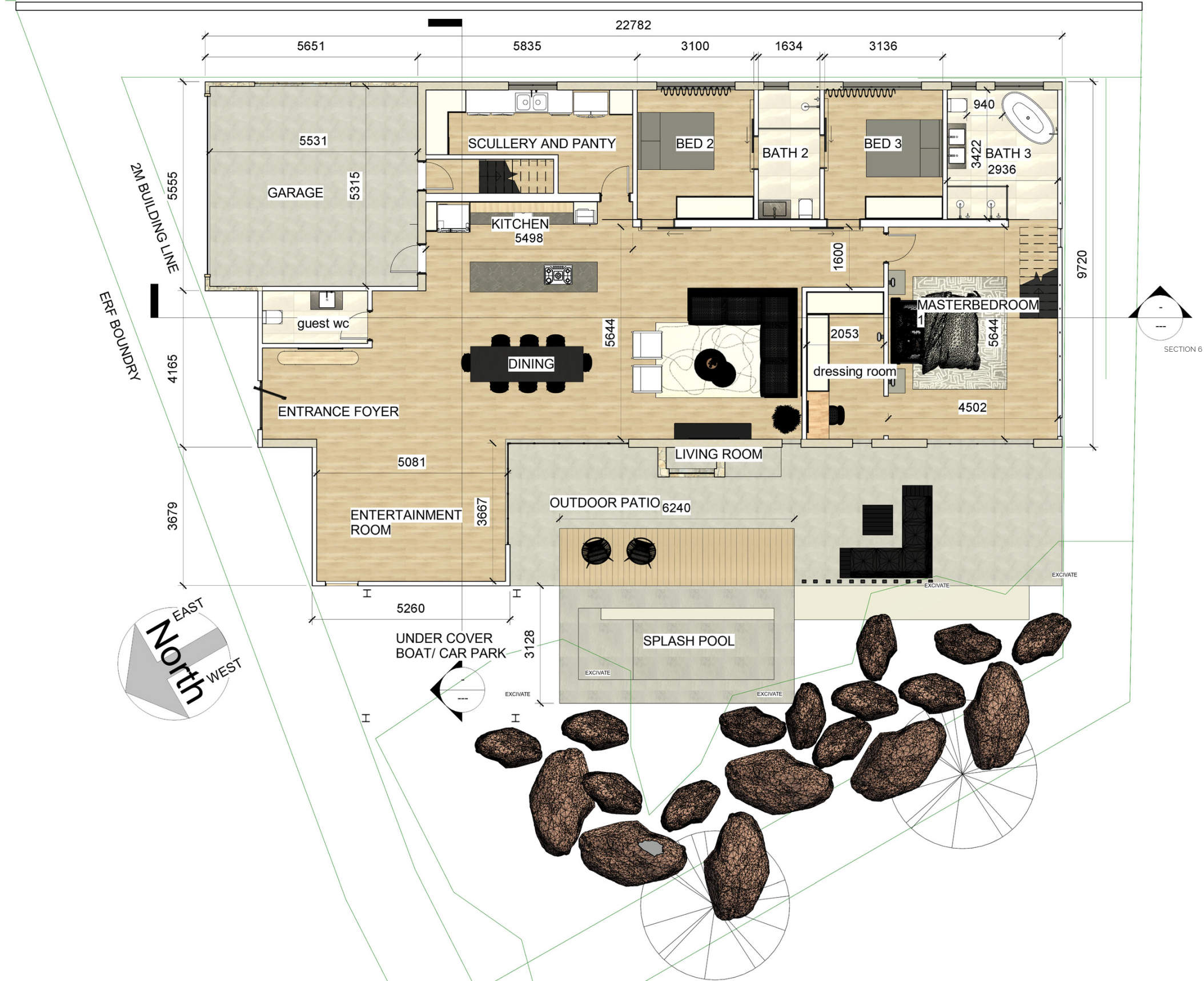
SPAZIO OUTDOOR WALL LIGHT

### Material 6

SWIMMING POOL, GARAGE AND PATIO SCREED



# FLOORPLAN



## LOFT PLAN

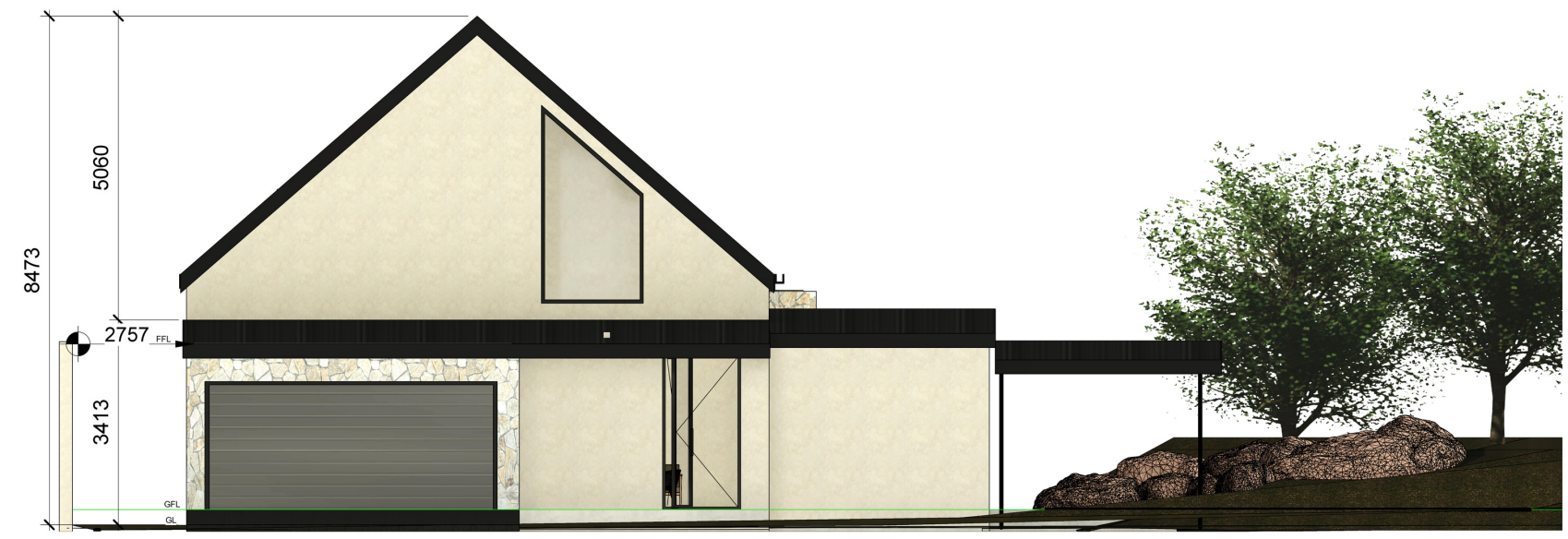
**Indoor m2**  
 Ground floor: 239m2  
 Loft: 59m2  
 Total: 298m2

**Outdoor m2:**  
 Patio: 54m2  
 Splash pool: 19m2  
 Total: 73m2

# ELEVATIONS



NORTH ELEVATION



EAST ELEVATION



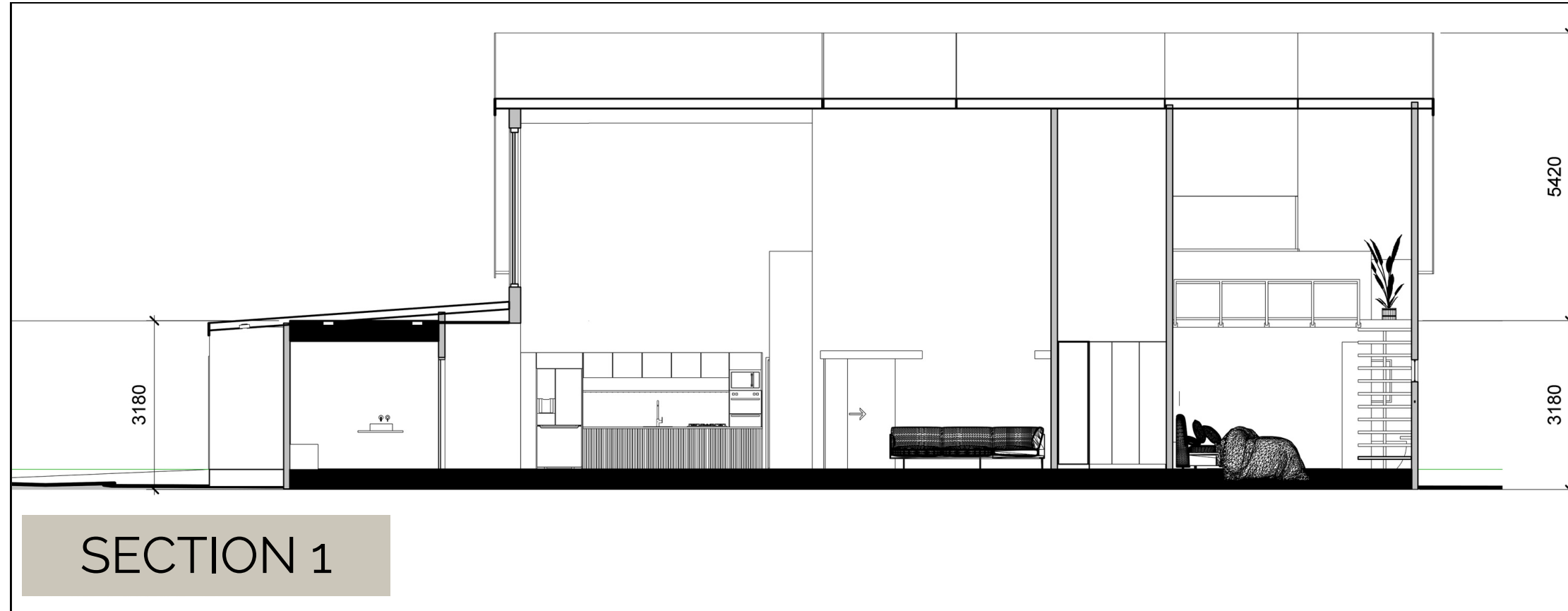
SOUTH ELEVATION



WEST ELEVATION



# SECTIONS

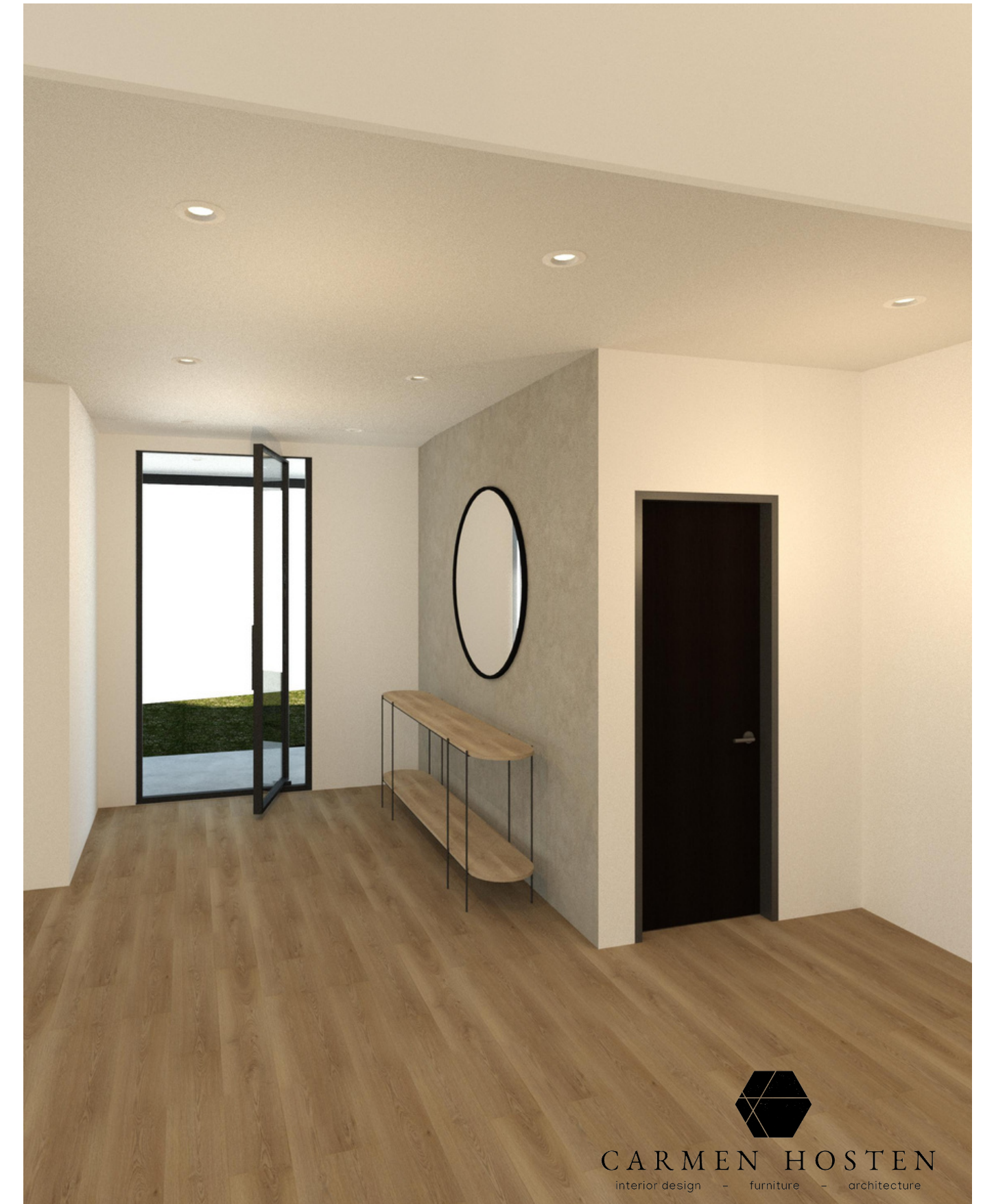


# INTERIOR RENDERINGS



CONTEMPORARY KITCHEN

# ENTRANCE FOYER



# INTERIOR RENDERINGS



CARMEN HOSTEN  
interior design - furniture - architecture



BEDROOM WITH OPEN LOFT

# OPEN PLAN KITCHEN / DINING



# OPEN PLAN LIVING / DINING



# LIVING / TV ROOM





# INTERIOR COLOR SCHEME

## Materials

### Material 1

SUMMER WHITE CUPBOARDS

### Material 2

PLASTERED WALLS WITH DULUX WHITE PAINT EGGSHELL ENAMEL ( MID SHEEN)

### Material 3

WOODEN SLATS FEATURES

### Material 4

STONE GRAY QUARTZ COUNTER TOPS

### Material 5

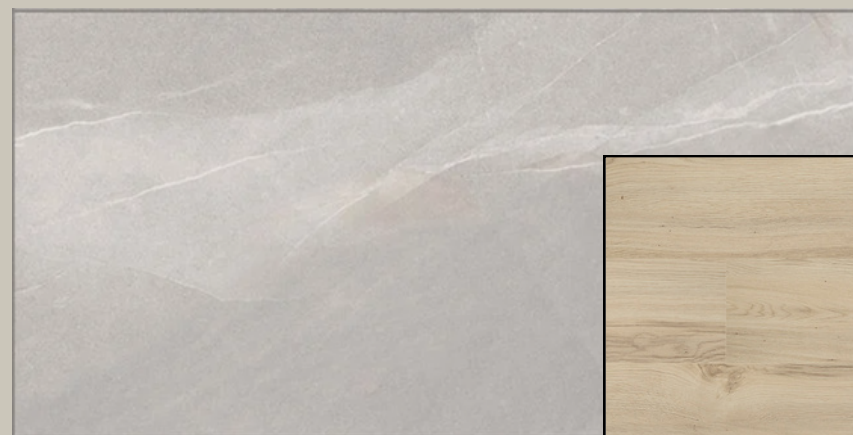
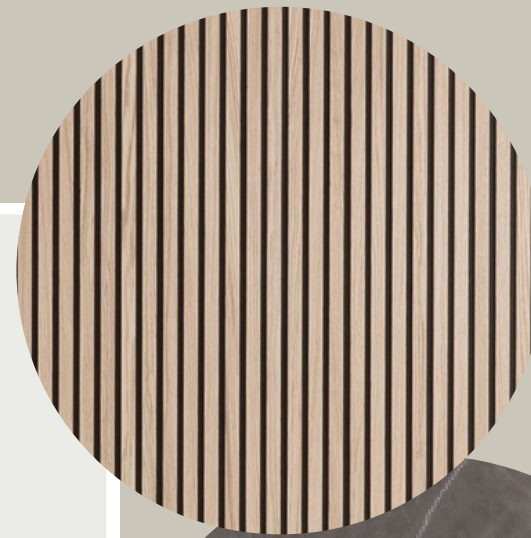
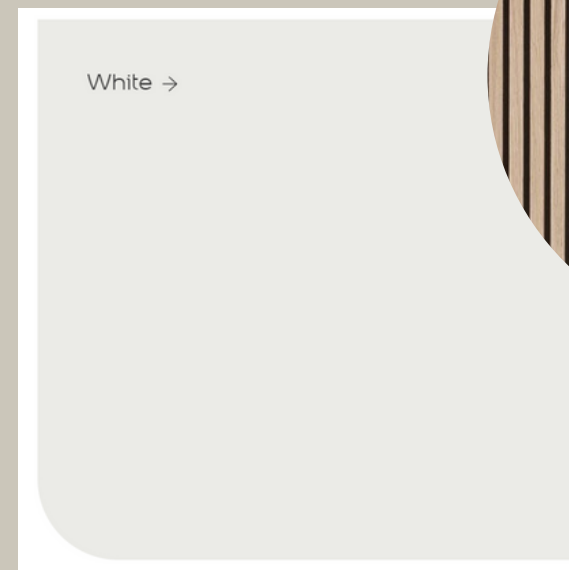
Kronos Ash Matt Glazed Eco Porcelain Tile 600 x 1200mm: Bathrooms

### Material 6

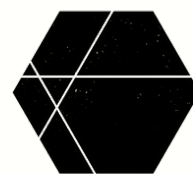
LAMINATE FLOORING NATURAL LINE ILGAZ FROM FINFLOOR

### Material 7

EUROTREND WALL LIGHTS



THANK YOU



CARMEN HOSTEN

interior design - furniture - architecture