

TIMELESS

20 BARRINGTON ESTATE _____



AN INTERIOR DESIGN PROJECT BY..



CARMEN HOSTEN

interior design - furniture - architecture

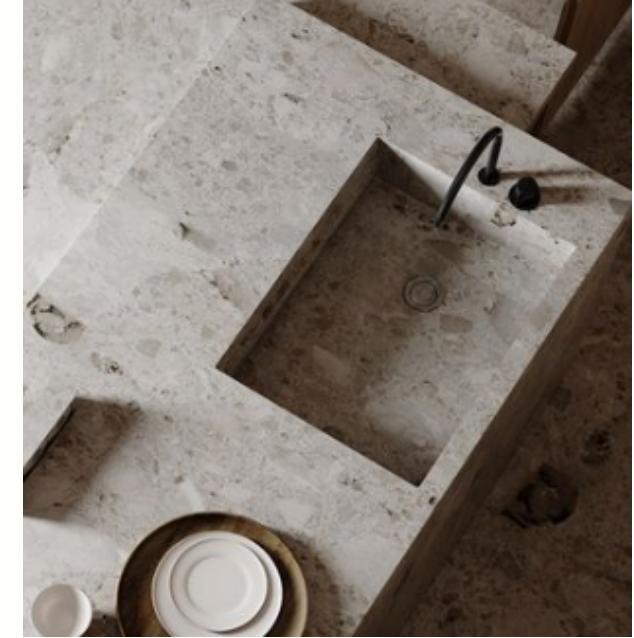
EARTHEN SPACE.

Project inspiration and motive

This project was ultimately inspired by Mrs Reddy's love for cooking and making the kitchen/ dining space more practical, comfortable and attractive.

We followed the idea of using natural, glossy tones with a minimalistic approach. Allowing the space to be more clutter free and user friendly.

NEXT PAGE...



Kitchen



Project inspiration

Pantry



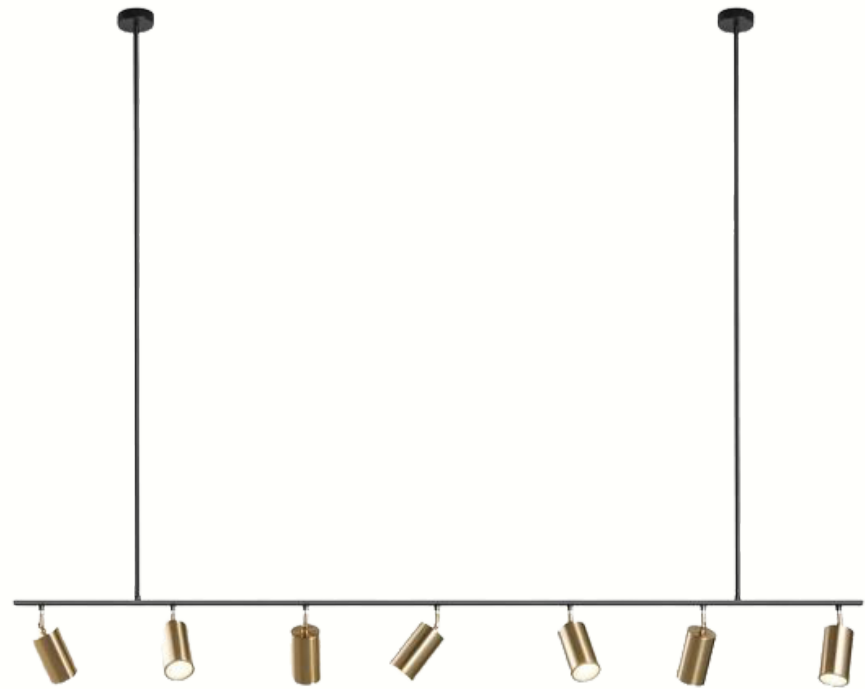
Project inspiration

Scullery & Washroom

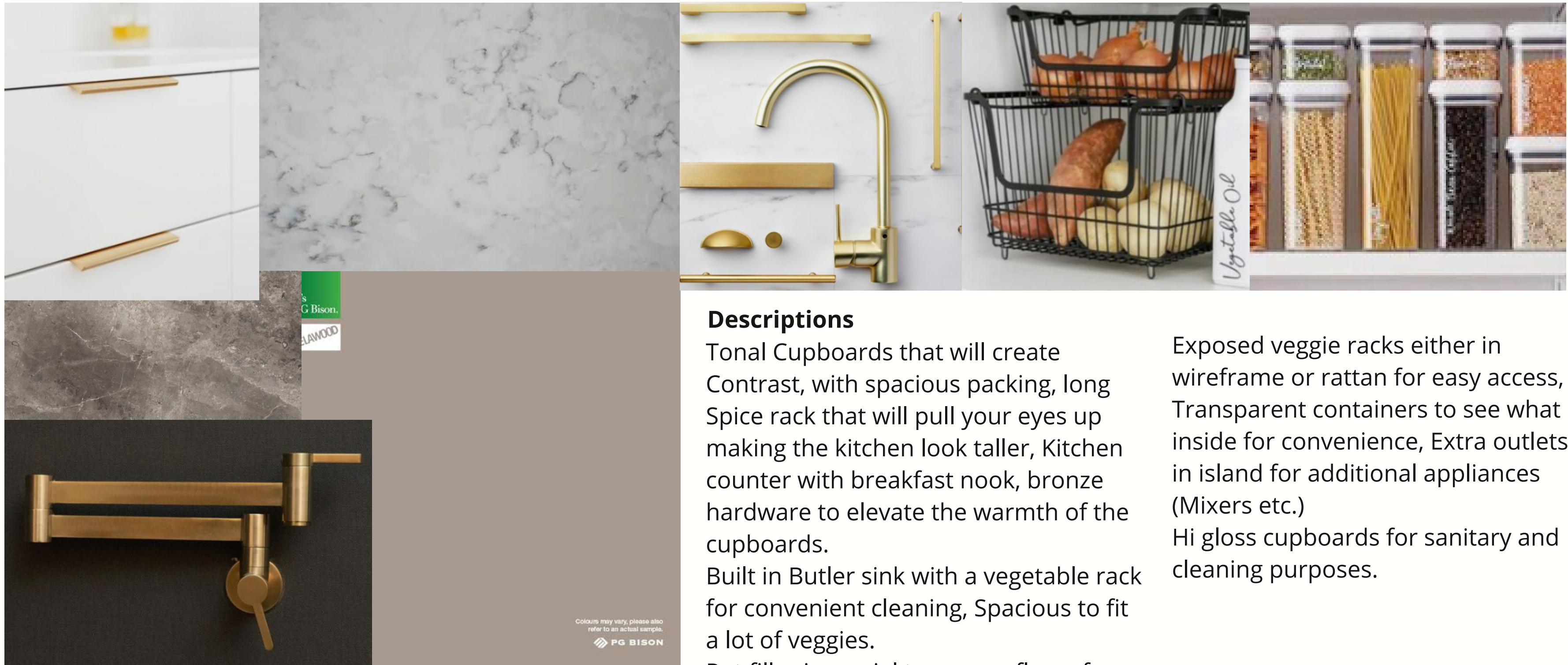


Project inspiration

Decor



Our Product Portofolio



Descriptions

Tonal Cupboards that will create Contrast, with spacious packing, long Spice rack that will pull your eyes up making the kitchen look taller, Kitchen counter with breakfast nook, bronze hardware to elevate the warmth of the cupboards.

Built in Butler sink with a vegetable rack for convenient cleaning, Spacious to fit a lot of veggies.

Pot filler is crucial to ensure flow of kitchen and convenience.

Exposed veggie racks either in wireframe or rattan for easy access, Transparent containers to see what is inside for convenience, Extra outlets in island for additional appliances (Mixers etc.)

Hi gloss cupboards for sanitary and cleaning purposes.

Materials

Material 1

Folkstone Grey PG Bison Gloss



Material 2

Candy Floss Quartz



Material 3

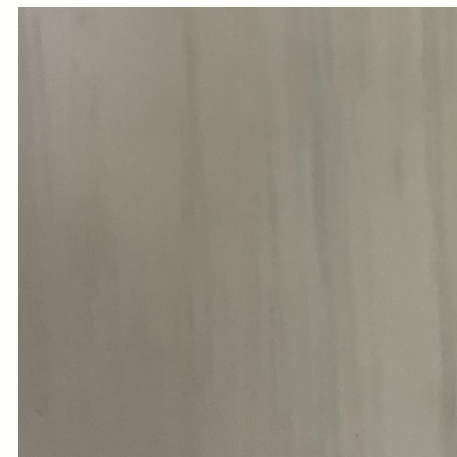
Hertex Wallpaper

Material 4

Congo PG Bison Gloss

Material 5

Current tile 800 x 800mm



Material 6

Brushed gold elements



The Design

With a minimalistic, practical yet elegant sense of style. The design was motivated by the clients love for cooking and an open plan living environment. Taupe, dark wood and crisp white delicately textured countertops combined with glossy floors and gold accents.



The Design

option 2

With a minimalistic, practical yet elegant sense of style. The design was motivated by the clients love for cooking and an open plan living environment. Taupe, dark wood and crisp white delicately textured countertops combined with glossy floors and gold accents.

Changes made: Tall spice rack added next to oven, appliance station moved to right, undercount basin added, hob fan moved to 800mm from counter, instead of 700mm. Changes to cupboardry due to previous changes

Our Vision

Easy sense of flow

The space planning layout allows the client to move easily in the kitchen, with minimal/ no obstacles. Oven, stove and butlers basin withing close proximity from one another.

Elegance

The design is created with glossy finishes in natural tones, undermount lighting, refined gold handles and a modern track pendant light. Together this creates a tasteful and timeless kitchen space.



Our Vision

Easy sense of flow

The space planning layout allows the client to move easily in the kitchen, with minimal/ no obstacles. Oven, stove and butlers basin withing close proximity from one another.

Elegance

The design is created with glossy finishes in natural tones, undermount lighting, refined gold handles and a modern track pendant light. Together this creates a tasteful and timeless kitchen space.



Pantry

- Open shelving
- Sliding door
- Pantry organisation, using baskets, tupperware, boxes and cans.
- remove an extra 800mm from wall
- remove current wall
- build new box around fridge
- Blackboard for fun and facts



Colour Swatch





Extra Special

Butler sink

Butler sinks are extraordinarily practical when it comes to kitchen chores ranging from washing vegetables to scrubbing the largest pots or grill trays.

Hidden Hoodvent

A concealed or built-in range hood is integrated into the kitchen and out of sight. Hiding a hood, or any appliance for that matter, helps focus the attention on the kitchen cabinetry and other design elements, rather than on the appliance itself. Concealed hoods are especially beneficial in a small kitchen, which can get visually cluttered when lots of appliances are out in the open.

Undercounter Lighting

Undermount led lighting creates depth and warmth to any kitchen. It is also practical and makes cooking a lot easier.

Appliance station

A comfortable appliance station with a raising door is a cool idea to hide mixers, smoothie machines or toasters when not in need. This will make your kitchen look sleek and keep all the appliances hidden.



Extra Special

Butler sink

Butler sinks are extraordinarily practical when it comes to kitchen chores ranging from washing vegetables to scrubbing the largest pots or grill trays.

Hidden Hoodvent

A concealed or built-in range hood is integrated into the kitchen and out of sight. Hiding a hood, or any appliance for that matter, helps focus the attention on the kitchen cabinetry and other design elements, rather than on the appliance itself. Concealed hoods are especially beneficial in a small kitchen, which can get visually cluttered when lots of appliances are out in the open.

Undercounter Lighting

Undermount led lighting creates depth and warmth to any kitchen. It is also practical and makes cooking a lot easier.

Appliance station

A comfortable appliance station with a raising door is a cool idea to hide mixers, smoothie machines or toasters when not in need. This will make your kitchen look sleek and keep all the appliances hidden.

Scullery

- remove existing cabinet
- Add double sink and gold mixer
- Use cotton candy stone as backsplash
- Open space for undercounter dishwasher
- remove current scullery
- Undermount lighting



Coffee station

- floating shelf with drawers
- Gold wall hung shelves



Pantry / Wash Room

(2nd Option of extending)

- Long open shelving for easy access
- Brass faucet and handles
- Optional Feature wall Behind shelving
- Brass faucet and handles
- Exposed Baskets for vegetable access and ventilation



Pantry / Wash Room

(2nd Option of extending)

- Lifted Washing machine & dryer
- Enough Space for small fridges
- Extra Counter serving as a folding station
- Long cupboards for storage of cleaning materials
- Adding a window for ventilation and natural light





Don't forget to pick up
the kids at 3:45pm
LOVE YOU!
grocery list
pineapple with cereal
orange juice, bread, milk



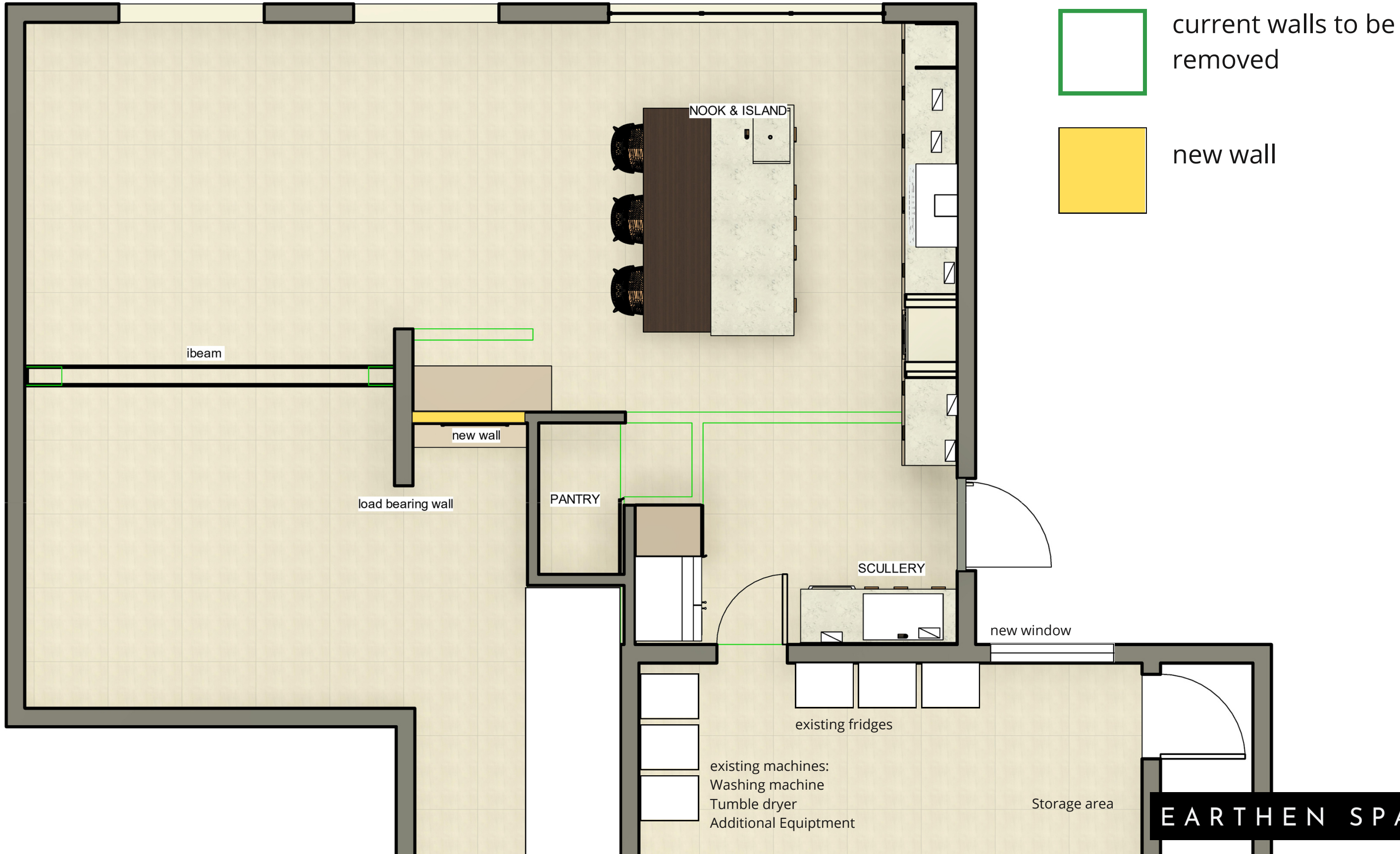
Don't forget to pick up
the kids at 3:45pm
LOVE YOU!

grocery list
pineapple, milk, cereal
eggs, pasta, tomatoes, etc.

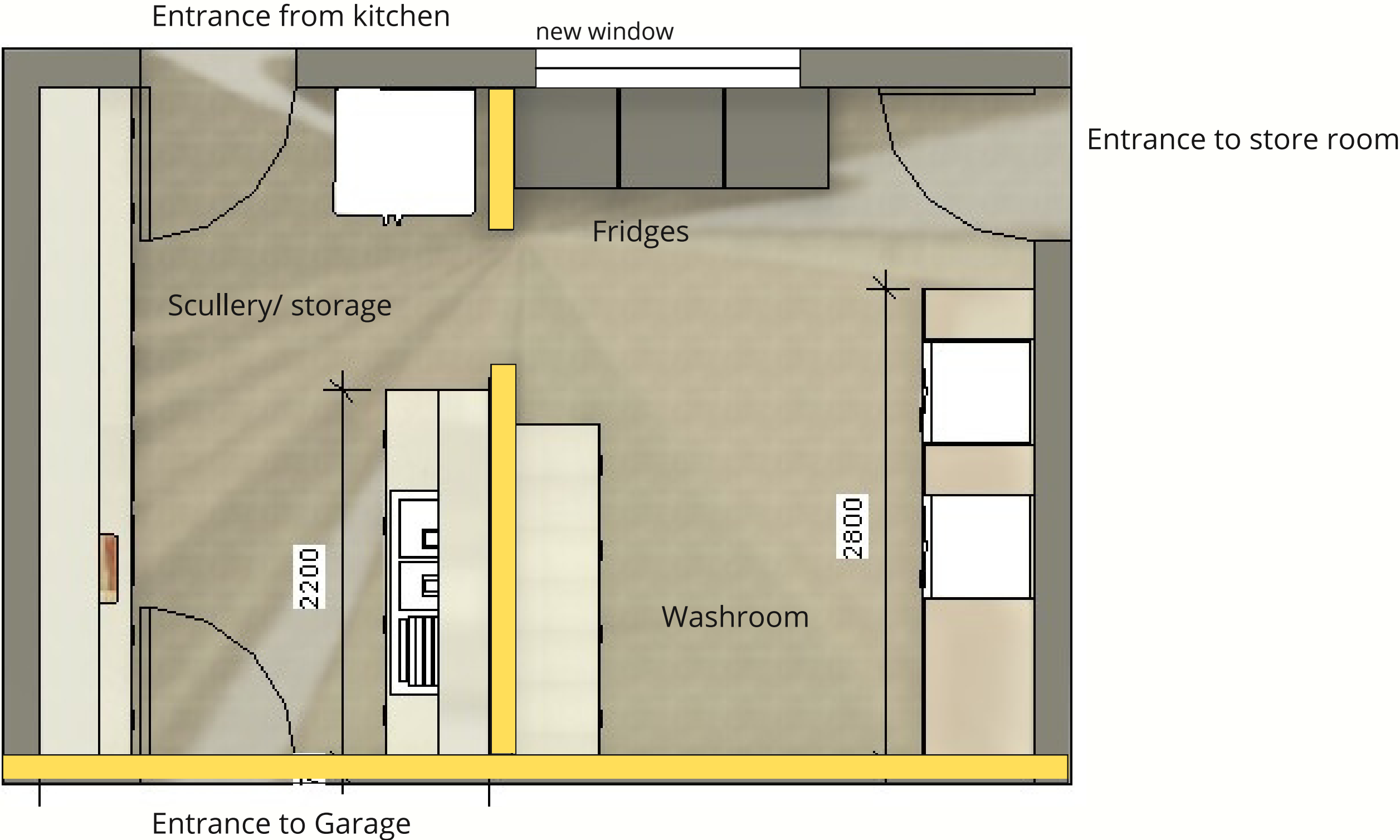
Entrance Wall

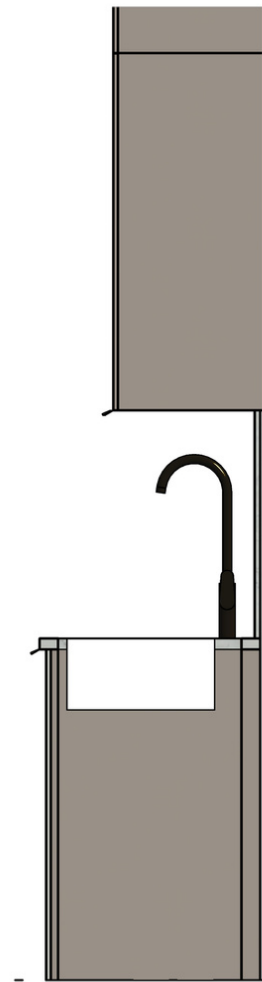


Space Layout: without added scullery



Space Layout: additional scullery and washroom





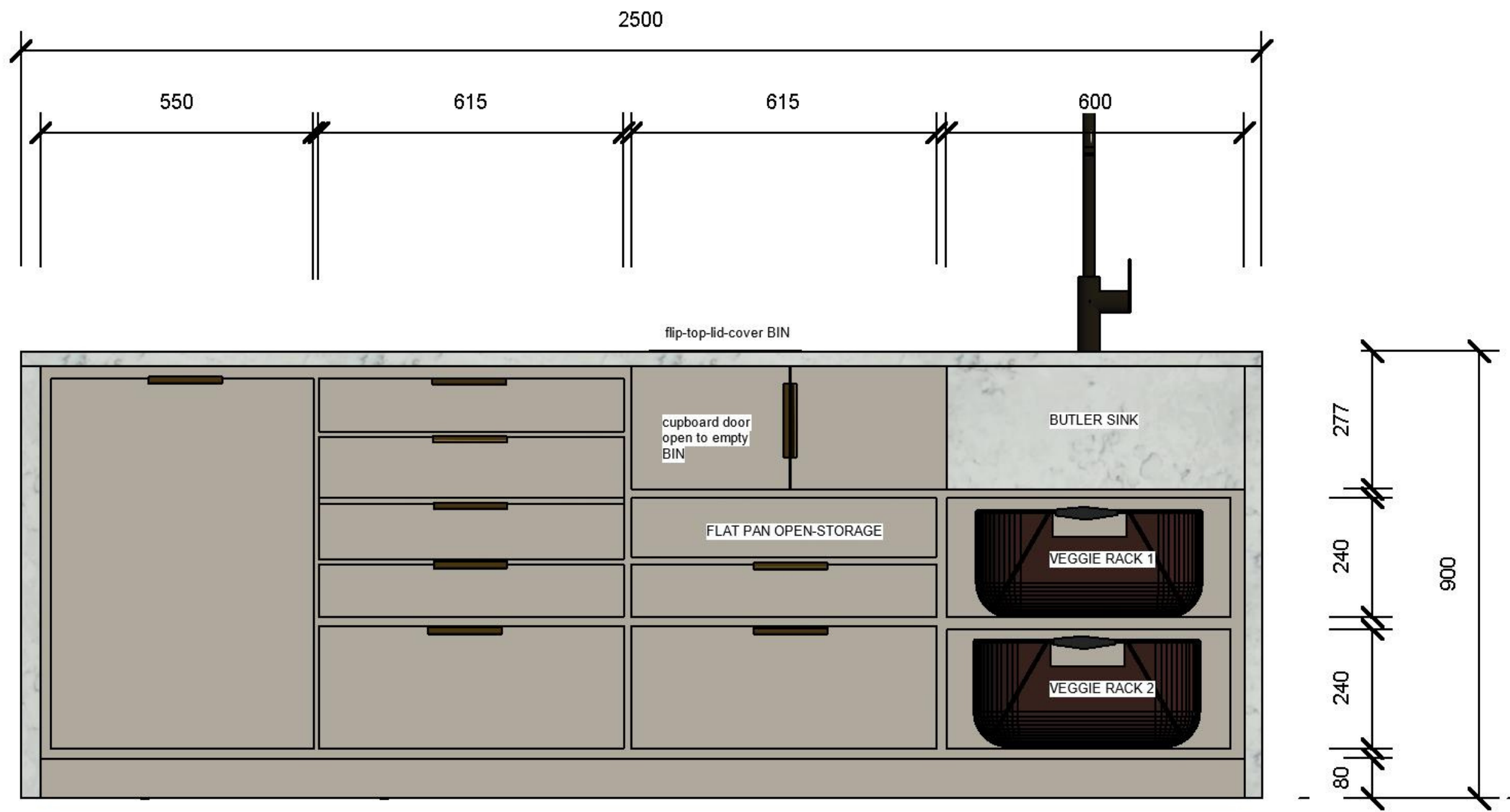
PG BISON CONGO

CANDY FLOSS STONE

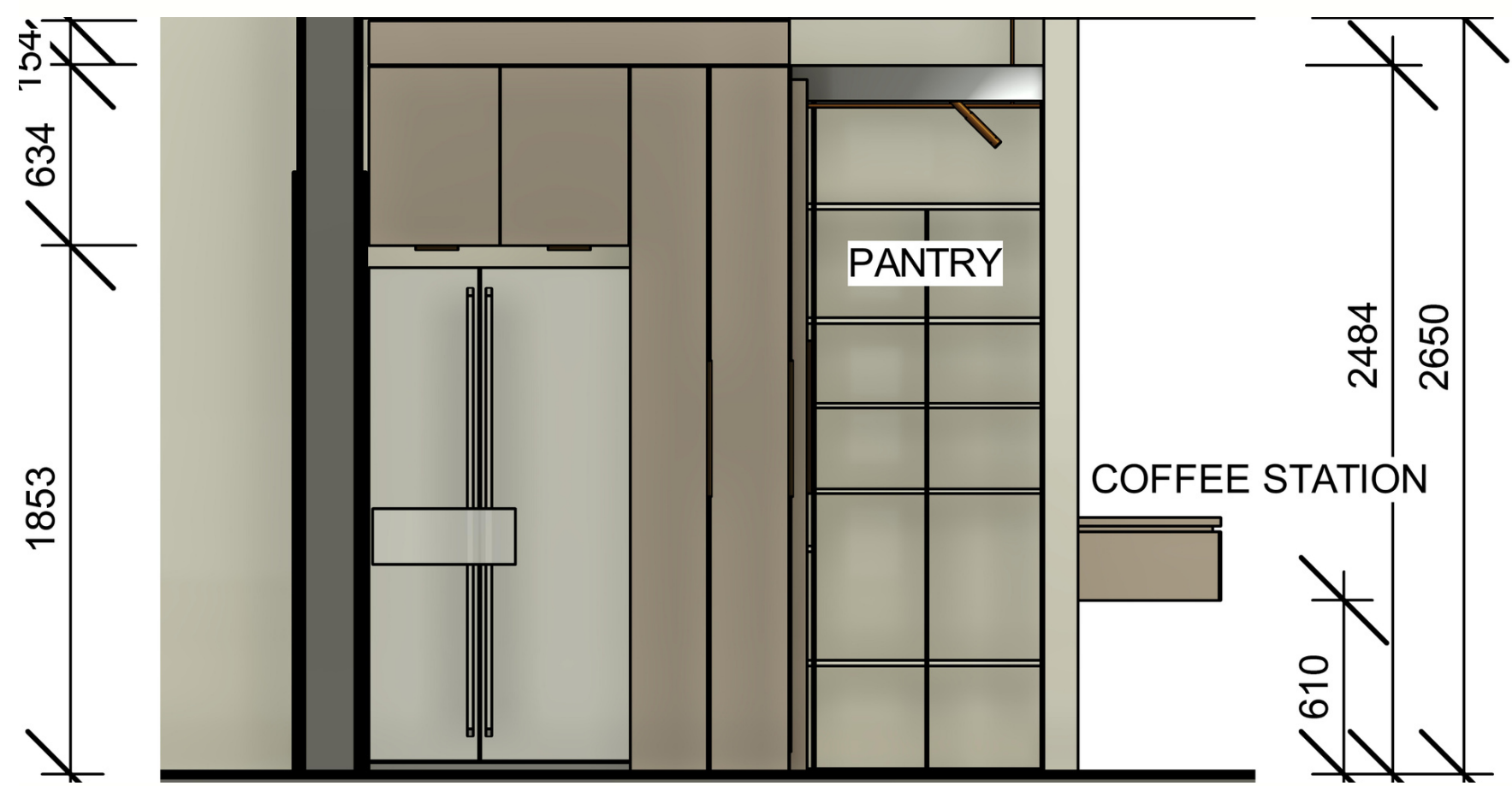
PG BISON FOLKSTONE GREY: GLOSSY

CANDY FLOSS STONE WATERFALL

ELEVATION 1



ELEVATION 2: ISLAND



SECTIONS: SCULLERY AND PANTRY



THANK YOU